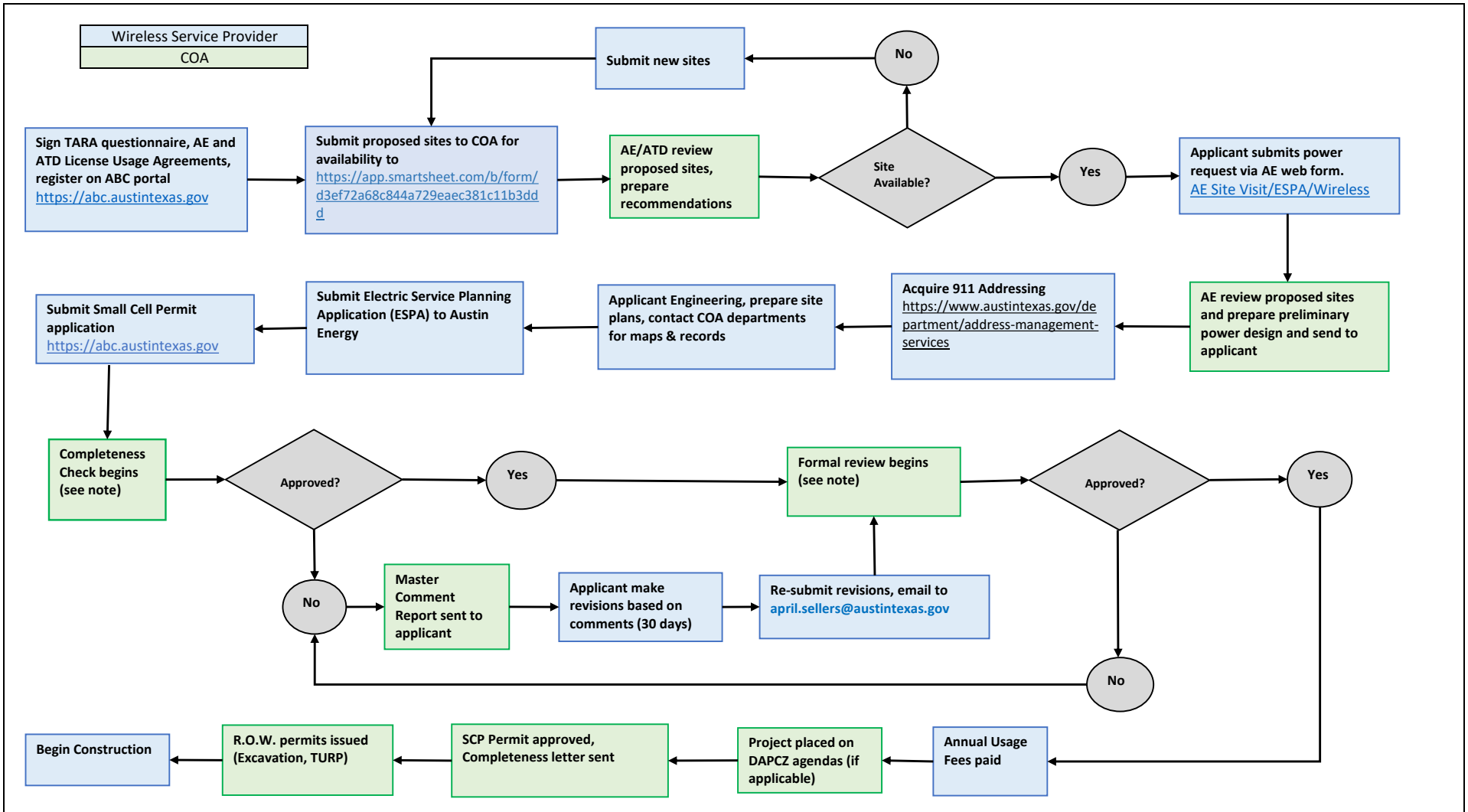


Small Cell Process Flowchart for Network Node



Note #1: If you are applying for a new node support pole, pole design must be submitted to Urban Design prior to requesting a feasibility review.

Note #2: Review cycles vary depending on node type.

Network Node
 (Completeness Check is 10 days)
 (Review Cycle 1 is 20 days)
 (Review Cycle 2 is 10 days)

Node Support Pole
 (Completeness Check is 10 days)
 (Review Cycle 1 is 20 days)
 (Review Cycle 2 is 10 days)

Transport Facility
 (Completeness Check is 10 days)
 (Review Cycle 1 is 20 days)
 (Review Cycle 2 is 10 days)