

Oakwood Cemetery Site Plan





hatch+ulland owen
architects

1010 East 11th Street
Austin, Texas 78702
T: 512.474.8548
F: 512.474.8643
www.huarchitects.com

Civil Engineer:
Chan & Partners Engineering LLC
4319 James Casey St, Suite 300
Austin Texas 78745
Ph. (512) 480-6155

Structural Engineer:
Structures
1010 W 11th Street, Suite 100,
Austin, TX 78703
T: 512.499.0919

Mechanical, Electrical, and
Plumbing Engineers:
Encotech Engineering
Consultants
8500 Bluffstone Cove, Suite B-103
Austin, Texas 78759
T: 512.538.1101

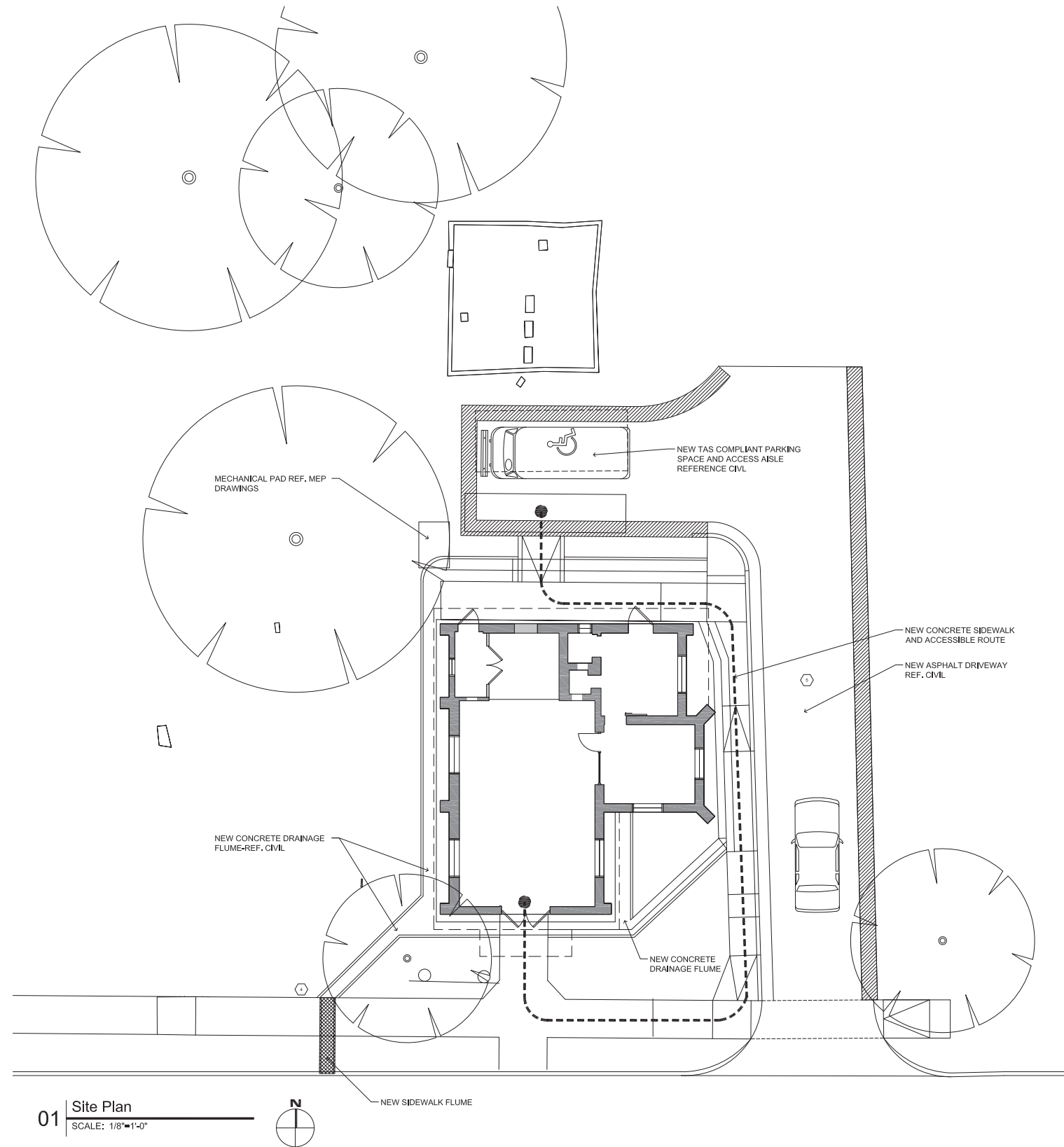
OAKWOOD CEMETERY CHAPEL
RESTORATION

NOTE: This document, the basis and design incorporated herein are and shall remain the property of the architect. These documents are not to be used or altered, in whole or in part, for other than the original intended use, nor are they to be assigned for any third party without written permission from hu+o architects.

ISSUE DATES:	
07.21.14	60% Review Set
....
....
....
....
....
....
....
....

Siteplan

A0.0



01 Site Plan
SCALE: 1/8"=1'-0"