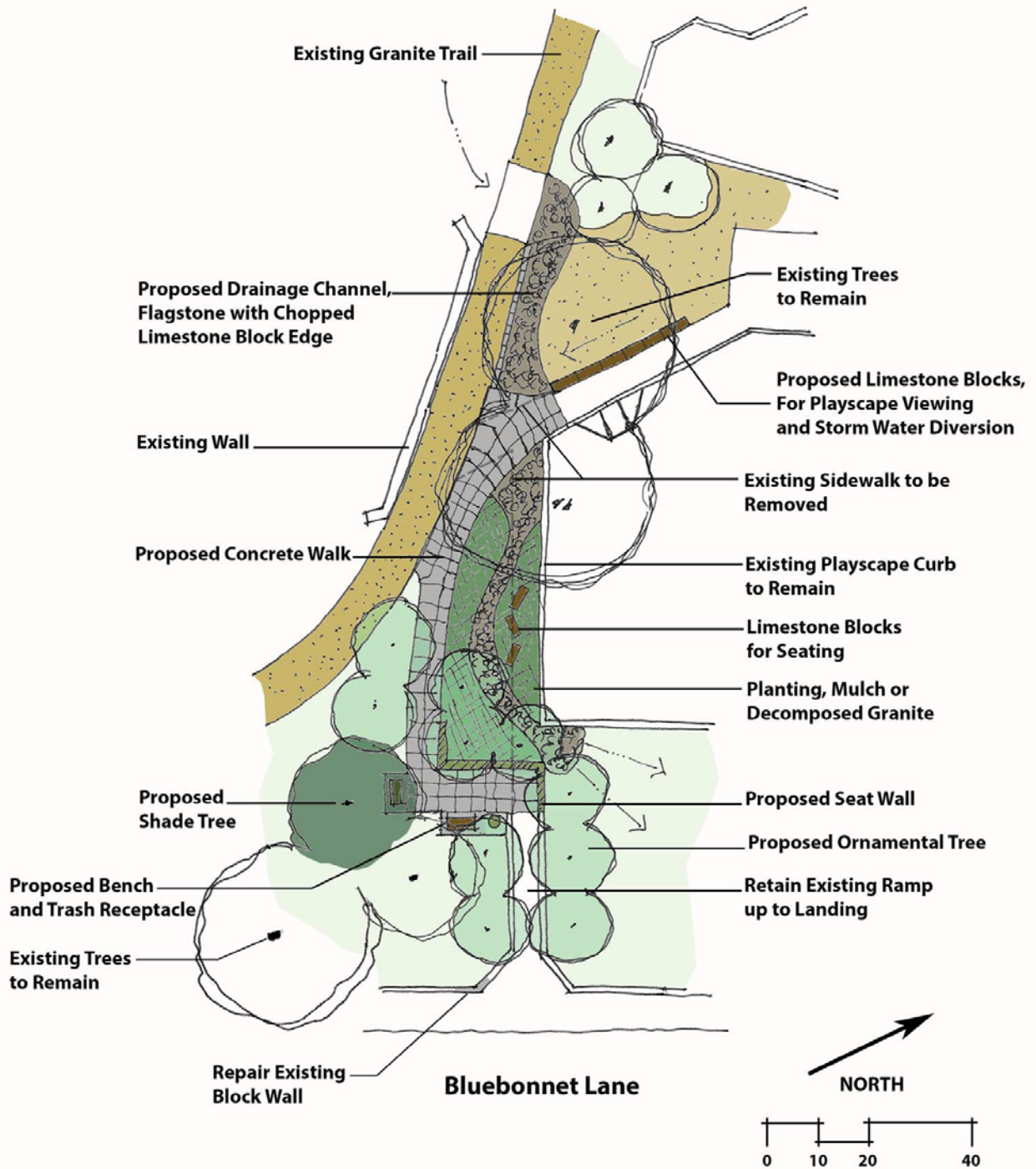


Project Area Map and Current Conditions



Proposed Project Concept



East Entry Concept
Little Zilker Neighborhood Park

September 15, 2015

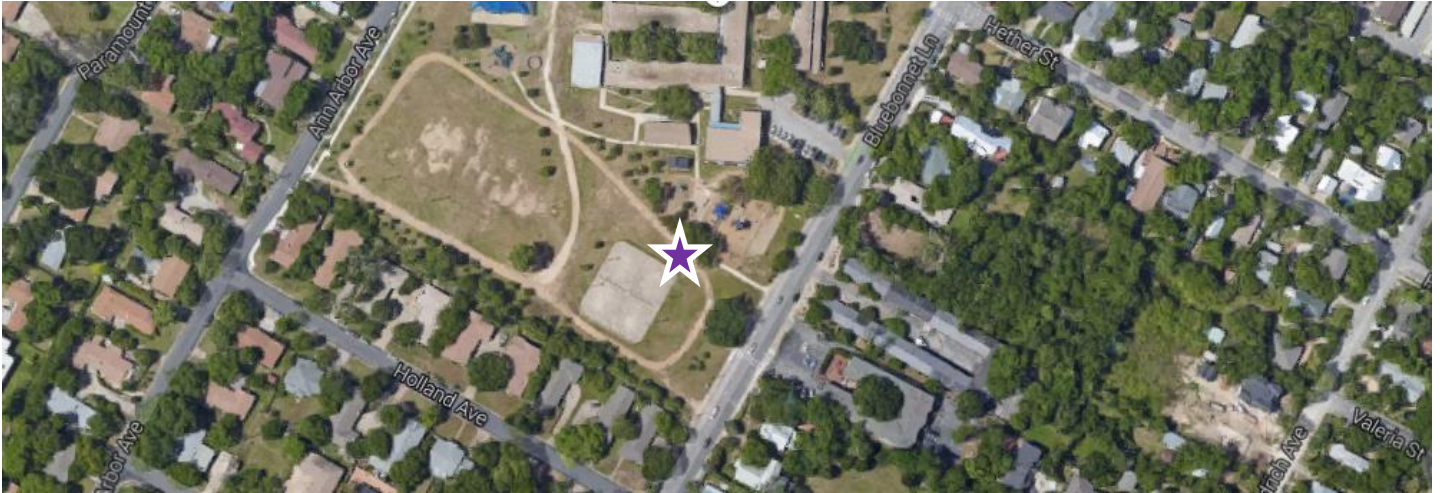


Neighborhood Partnering Program Application Summary

Project Name: Bluebonnet Ramp Improvement Project

Applicant: Friends of Little Zilker Park

Project location: Little Zilker Park, 1900 Bluebonnet Ln



Project Scope & Description

- Project will relocate a portion of sidewalk, install a seat wall, 10 limestone blocks, 2 benches, 1 trash receptacle and a flagstone drainage channel. This will improve the access ramp and entry to Little Zilker Park, providing a gathering space and improving safety and drainage of the northwest section of Little Zilker Park adjacent to Zilker Elementary School.
- Project concept has been reviewed and approved by staff at the Public Works and Parks and Recreation Departments.

Project Costs & Cost Match

Total Project Costs: \$46,800

Friends of Little Zilker Park – Cash Match	\$10,000
City of Austin – Construction & Contingency	\$36,800

Friends of Little Zilker Park : \$17,891

Cash Match	\$10,000
Maintenance / Volunteer Hours (Not included in Total Project Costs)	\$7,891

Project Category: Standard (Under \$150,000)

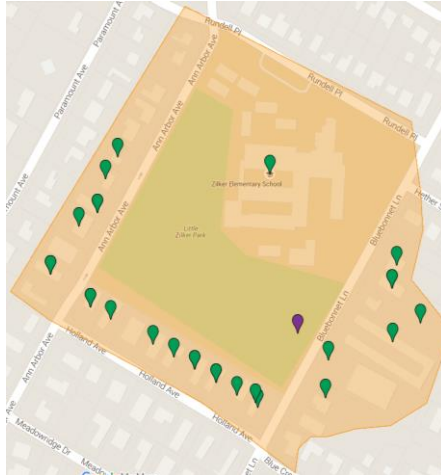
Cost Match Requirement (Community Cost Share / Total Project Costs): **Met**

Required Minimum Community Match (%):	30%
Actual Community Match (%)	38%

Description of Support, Participation & Maintenance

Evidence of Support Map

Total Number of Support Signatures	28
Impacted Stakeholders Identified	46
Impacted Stakeholders Signatures	28
Percentage	61%



- Friends of Little Zilker Park will provide a cash match of \$10,000.
- As their volunteer match, Friends of Little Zilker Park will conduct 4 volunteer work days with 20 volunteers each.
- The City of Austin will be responsible for relocating a portion of sidewalk, installing a seat wall, 10 limestone blocks, 2 benches, and a flagstone drainage channel.
- Letters of support were received for this project from Zilker Neighborhood Association and Austin Independent School District Zilker Elementary School principal for this project.

Evidence of Support

Criteria: **Met**

Quality of Life Enhancements

- The project will create a barrier between the playscape and the steep ramp to the street, increasing safety without limiting access to the playscape, park, or school.
- The project will add open space and improve the root zone and health of a significant oak tree. It will also divert storm water runoff away from the playscape and should reduce maintenance costs for the playscape fiber bed.
- The project complements the mosaic wall art project and creates a welcoming transition from the street to the playscape, jogging trail, tennis courts, and the rest of the park and school.

Incorporation of City Initiatives

- Project is in the Little Zilker Parks Plan and is supported by the 2008 Zilker Neighborhood Park Gateway and Safety Survey. The plan and the survey were conducted by the Zilker Neighborhood Association and Zilker Elementary Parent Teacher Association.
- Integrate erosion, flood, and water quality control measures into all City of Austin capital improvement projects (Imagine Austin - CFS P14).
- Create public spaces that attract and engage children and serve as gathering places for children and families (Imagine Austin - S P29).

COMPACT & CONNECTED

SUSTAINABLE WATER

WORKFORCE & EDUCATION

GREEN INFRASTRUCTURE

CREATIVE ECONOMY

HOUSEHOLD AFFORDABILITY

HEALTHY AUSTIN

CODE NEXT

