

Table 5

NAME: BLAME DAVE

Table 5 (1st group to present)

Blame Dave. GETTING THERE TOGETHER ASMP

Reporting Back

What we'd like to hear...

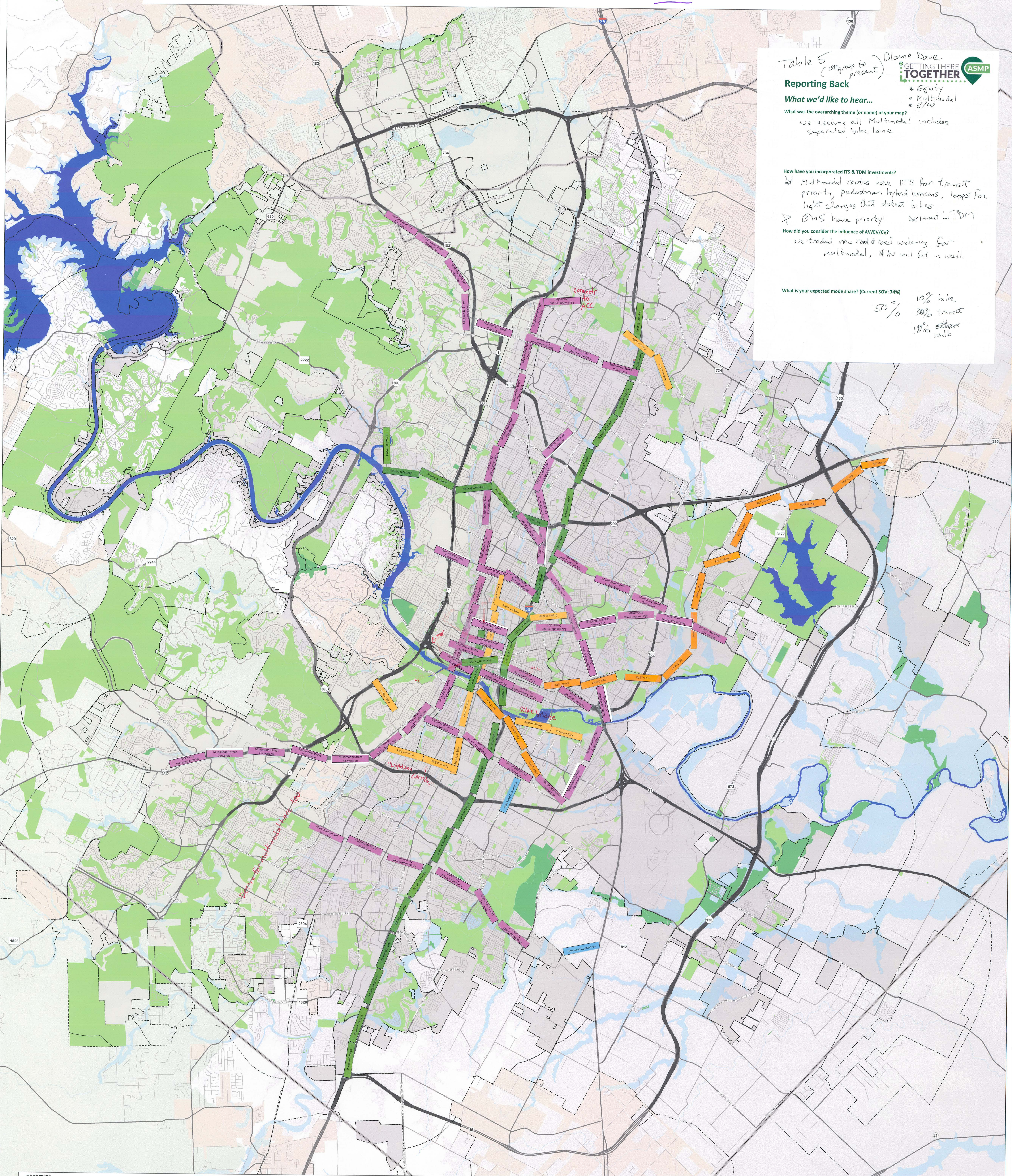
What was the overarching theme (or name) of your map?
we assume all Multimodal includes separated bike lane

How have you incorporated ITS & TDM investments?
 ✗ Multimodal routes have ITS for transit priority, pedestrian hybrid beacons, loops for light changes that detect bikes
 ✗ EMS have priority ✗ invest in TDM

How did you consider the influence of AV/EV/CV?
we traded new road & road widening for multimodal, \$AV will fit in well.

What is your expected mode share? (Current SOV: 74%)

50% 10% bike
30% transit
10% other walk



City of Austin	Existing Rail	Lakes	City of Austin Parks and Open Space		New Road Connection	Premium Transit	<i>Hard to represent with this activity importance of dispersed improvements like real bus shelters that protect from rain, lightning, and sun</i>
Austin City Limits	Level 1 Roads	Creeks	Travis County and State Parks		Roadway Widening	Premium Bike	
Other City Limits	Level 2 Roads	Floodplain	Edwards Aquifer	0 0.5 1 2 3 4 Miles	Rail Transit	Multimodal Street Conversion	<i>Assumption that multimodal includes protected bike facilities</i>
	Level 3 Roads			1 in = 0.75 miles			
	Level 4 Roads						
	Level 5 Roads						