



**Grow Green
Landscape Professional
Training Session
Trees & Plants**

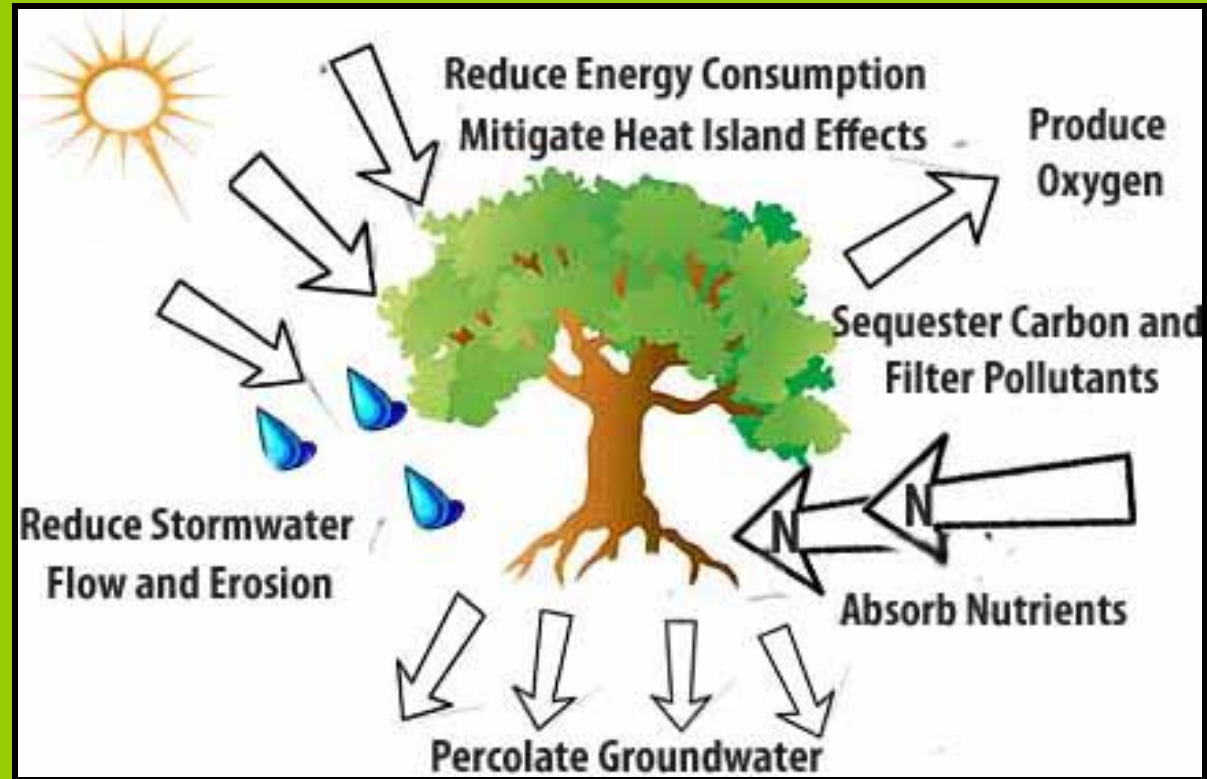
Austin's Tree Regulations

Michael Embesi
PDRD Tree Program

March 24, 2015

Urban Forest Benefits

Trees are critical to Austin's quality of life



And:

- Wildlife habitat
- Screen views & noise
- Property value
- Sense of place
- Aesthetics
- Added ecological value of mature trees
- Infrastructure which improves with time

Major Tree Initiatives



- ❖ **Tree Preservation Ordinance (1983)**
- ❖ **Analysis Preservation & Landscape Ordinances (2004)**
- ❖ **City Council's Urban Heat Island Resolution (2005)**
- ❖ **Tree Taskforce (2006)**
- ❖ **Mayor's Climate Change Initiative (2007)**
- ❖ **Urban Forestry and Environmental Boards
Joint Resolution (2008)**
- ❖ **Tree Summit (2009)**






City Programs Which Impact The Urban Forest



The Urban Forest Management Program

Watershed Protection Development Review

Tree Preservation and Replenishment

NEIGHBORHOOD PLANNING & ZONING	ECONOMIC GROWTH & REDEVELOPMENT SERVICES	WATERSHED PROTECTION & DEVELOPMENT REVIEW	PARKS & RECREATION	SOLID WASTE SERVICES	PUBLIC WORKS	FIRE	AUSTIN WATER UTILITY	AUSTIN ENERGY
GREAT STREETS	DOWNTOWN REDEVELOPMENT	CITY ARBORIST PROGRAM	ROW MAINTENANCE	LARGE BRUSH & YARD TRIMMINGS PICK-UP	CAPITAL IMPROVEMENT PROJECTS	DEVELOPMENT REVIEW	CLEAN WATER PROGRAM	GREEN BUILDING
NEIGHBORHOOD PLANNING & ZONING	BIG BOX RETAIL	ENVIRONMENTAL REVIEW	PRESERVES	DILLO DIRT	SUBDIVISION INFRASTRUCTURE CONSTRUCTION	WILDLAND FIRE INTERFACE	DILLO DIRT	TREE PLANTING
GIS/DATA ANALYSIS	ROBERT MUELLER AIRPORT REDEVELOPMENT	ENVIRONMENTAL INSPECTION	TREE PLANTING	CODE COMPLIANCE	ROAD IMPROVEMENTS		WILDLAND CONSERVATION	URBAN HEAT ISLAND
LONG RANGE TRANSPORTATION	SECOND STREET RETAIL	STREAM RESTORATION	TREATY OAK PROJECT	BULK BRUCH	INSPECTION		WATER CONSERVATION	CYCLE PRUNING
URBAN DESIGN	SMALL BUSINESS DEVELOPMENT	LANDSCAPE INSPECTION	CHRISTMAS TREE RECYCLING		SIDEWALK EASEMENTS			
ANNEXATION		CREEK MAINTENANCE	MAINTENANCE & PARK AND TRAIL PLANNING		ROW & ALLEY: DEBRIS REMOVAL			
AUSTIN COMMUNITREES		GROW GREEN	MEMORIAL DEDICATION TREE PLANTING		TRAFFIC SIGNS/SIGNALS CLEARANCE			
		FLOOD CONTROL	PARK PLANNING					
		GENERAL PERMITS						
		OAK WILT PROGRAM						
		MASTER PLAN						



Tree Ordinance Goals

- ❖ Ensure public health, safety, and welfare
- ❖ Conserve (preservation, maintenance, and replanting)

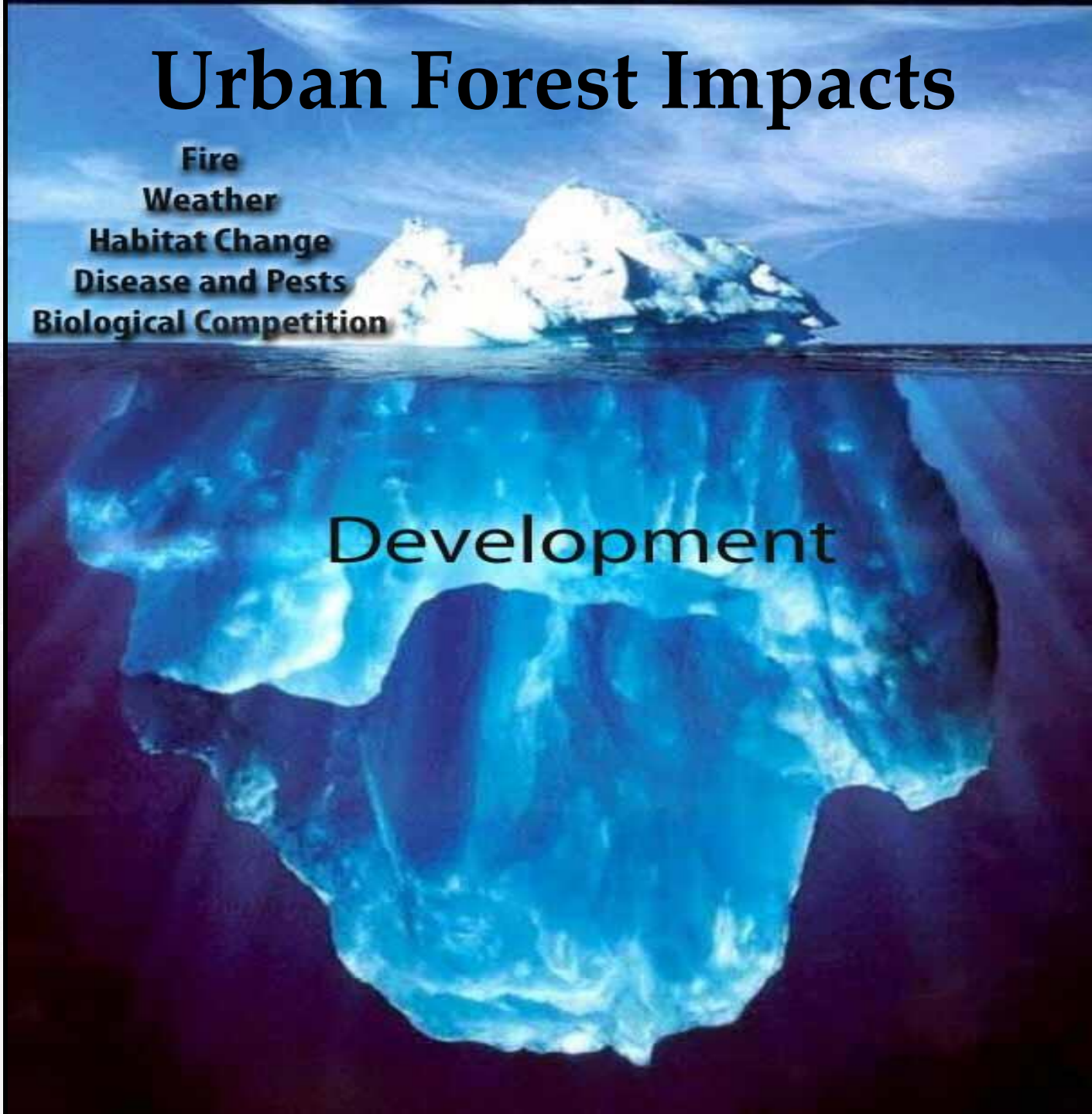


Preserve the character of Austin's urban forest, protect its current health, and increase its longevity

Urban Forest Impacts

Fire
Weather
Habitat Change
Disease and Pests
Biological Competition

Development

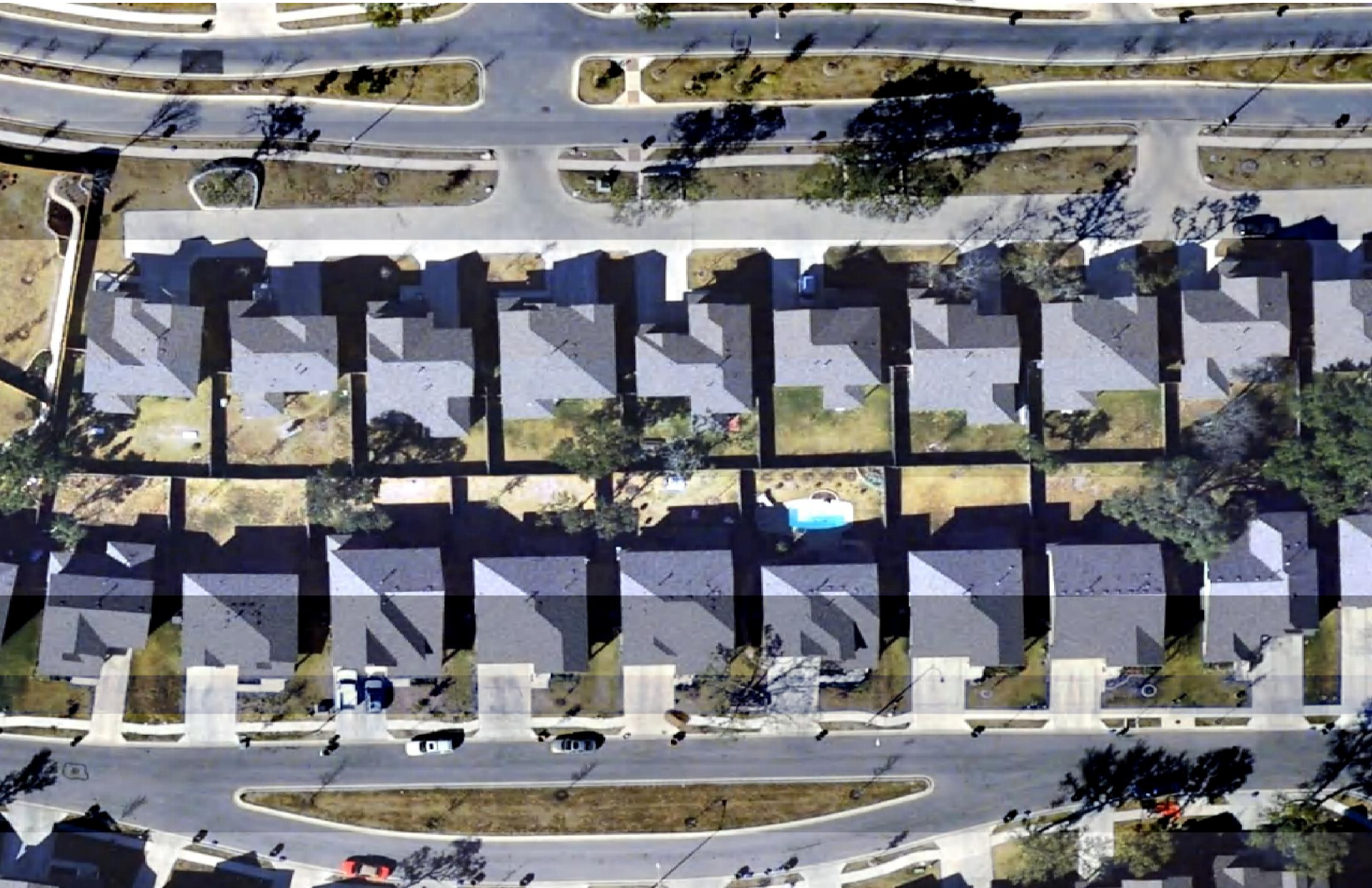


Residential Subdivisions Block View – Pre-Development



Residential Subdivisions

Block View – Post Development



Home Building

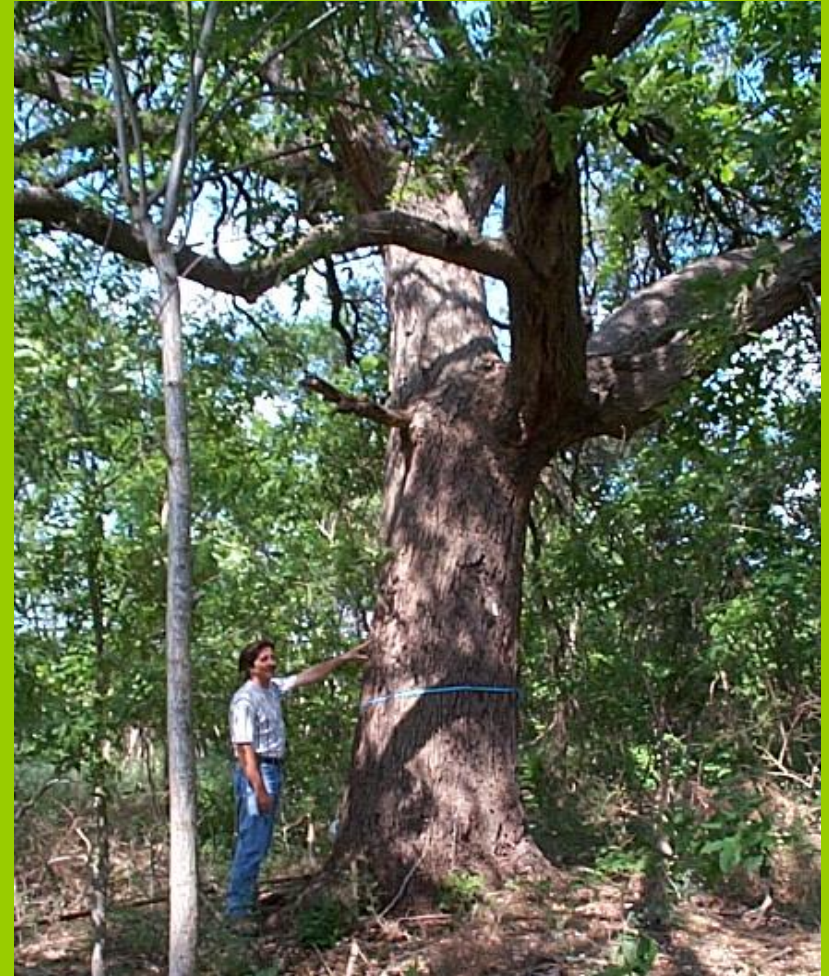


SECTION BB



Tree Assessment Variables

- Size (trunk diameter)
- Species
- Location
- Health
- Form
- History
- Susceptibility to change
- Density on lot
- Hazards
- Targets



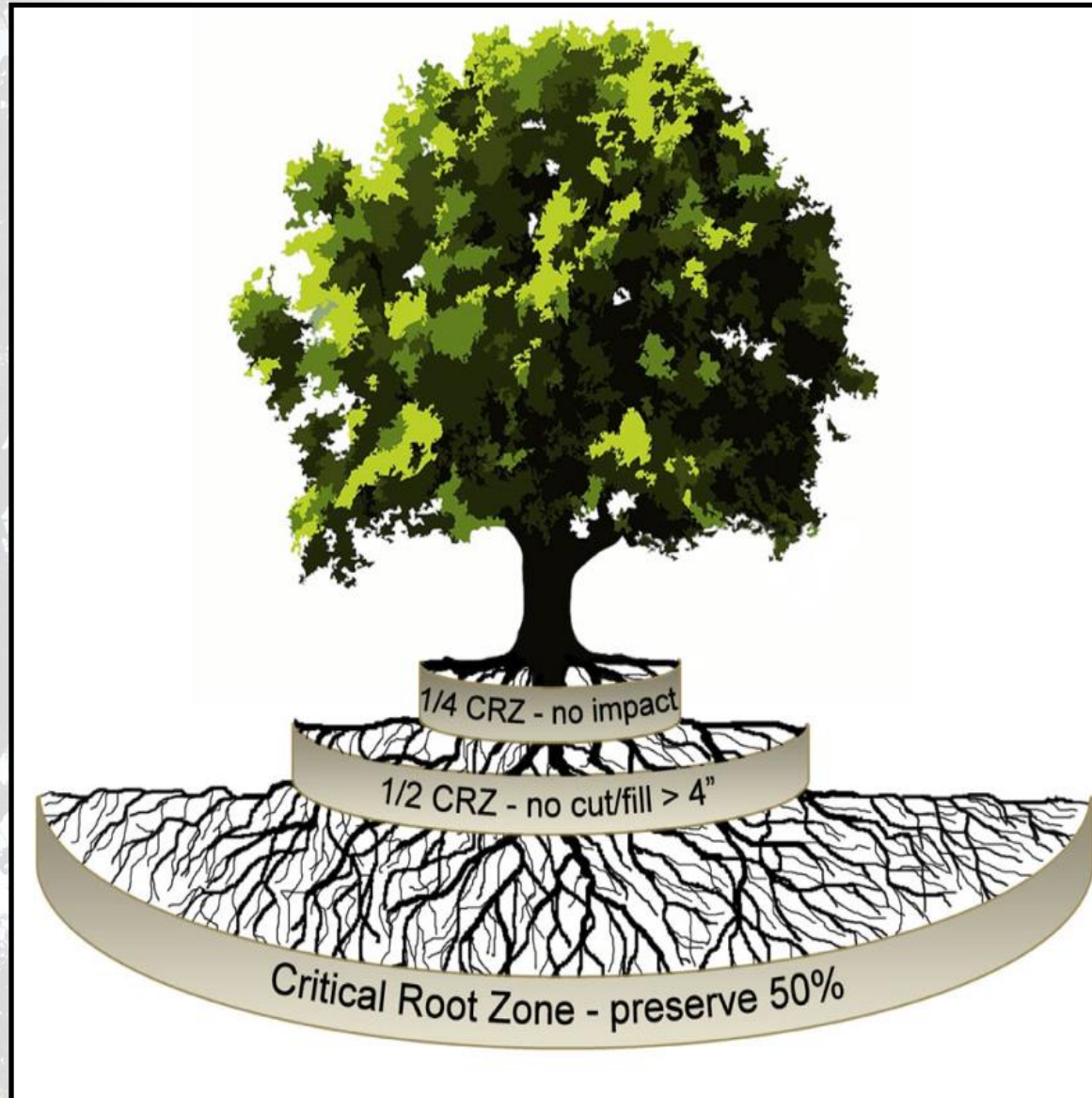
Root System



Root System



Critical Root Zones



Minimizing Impacts

- **Plan**
- **Continual Oversight**
- **Private Certified Arborist**
- **Mulch/Plywood**
- **Watering**



Reality

POTENTIAL IMPACTS

- Design (roads, buildings, parking spaces, utility lines, ponds)
- Activities (demolition, grading, cut and fill, construction, spoil storage, landscaping)



PROTECTIVE MEASURES

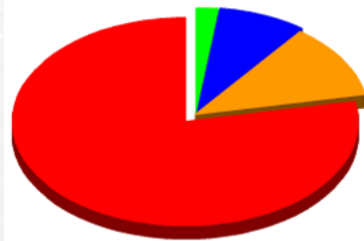
- Chain-link fence
- Prune limbs and roots cleanly
 - 8 inches of mulch
- Strap boards to trunk
- Private arborist care



Ordinance Generalities

(native healthy trees)

Trunk Size	Determined By	Meaning	Mitigation
8 – 19	Applicant	Where Feasible	50%
19 <	With Staff	Trees Within Project	100%
24–30*	With Staff	Preserved	300%
30* <	With Commission	Public Hearing	300%



*Select Species (Heritage Trees)

Mitigation Options

- Planting Trees
- Natural Area Preservation
- Soil Care Plan
- Transplanting
- Tree Fund



Proposed developments are reviewed to assure that a final product is achieved which results in a diversified and sustainable urban forest

Tree Planting

- Reforesting
- Voluntary
- Development
- Diversification
- Challenges

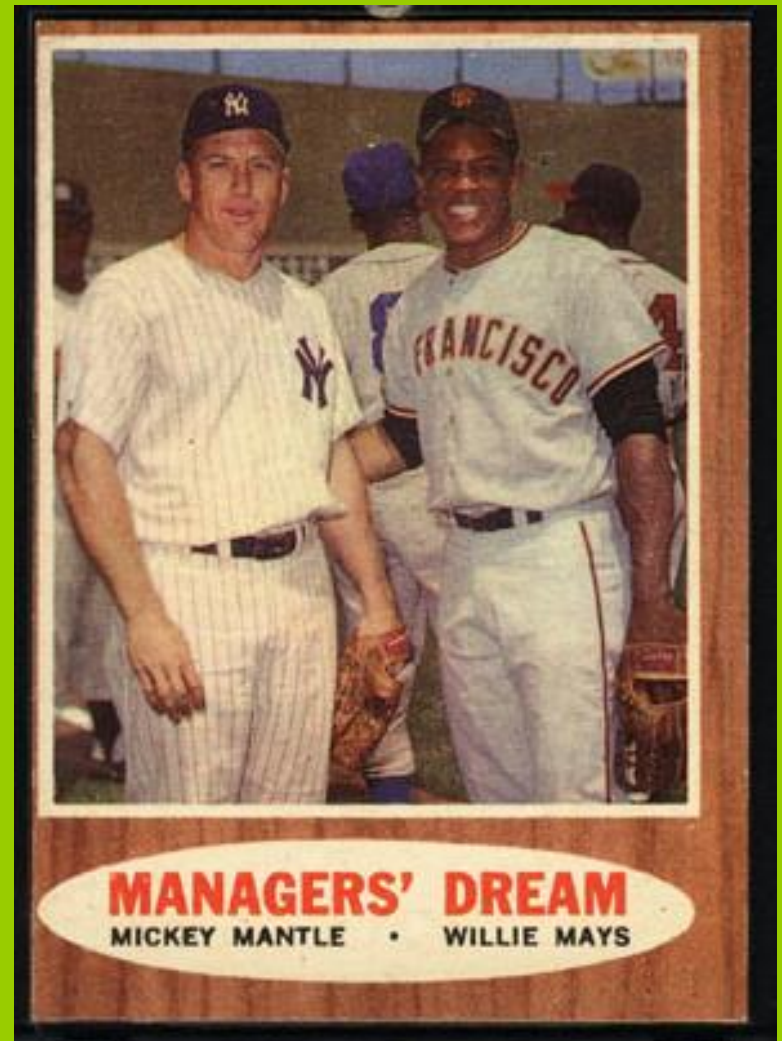


Tree Planting Right of Way



Important Players

- ❖ Concerned Citizens
- ❖ City Personnel (i.e. reviewers, inspectors, planners)
- ❖ City Council
- ❖ Upper Management
- ❖ Design Professionals
- ❖ Landscape Architects
- ❖ Engineers
- ❖ Architects
- ❖ Home Owner Associations
- ❖ Certified Arborists





Thank you

(512) 974-1876

cityarborist@austintexas.gov

<http://austintexas.gov/departments/city-arborist/>