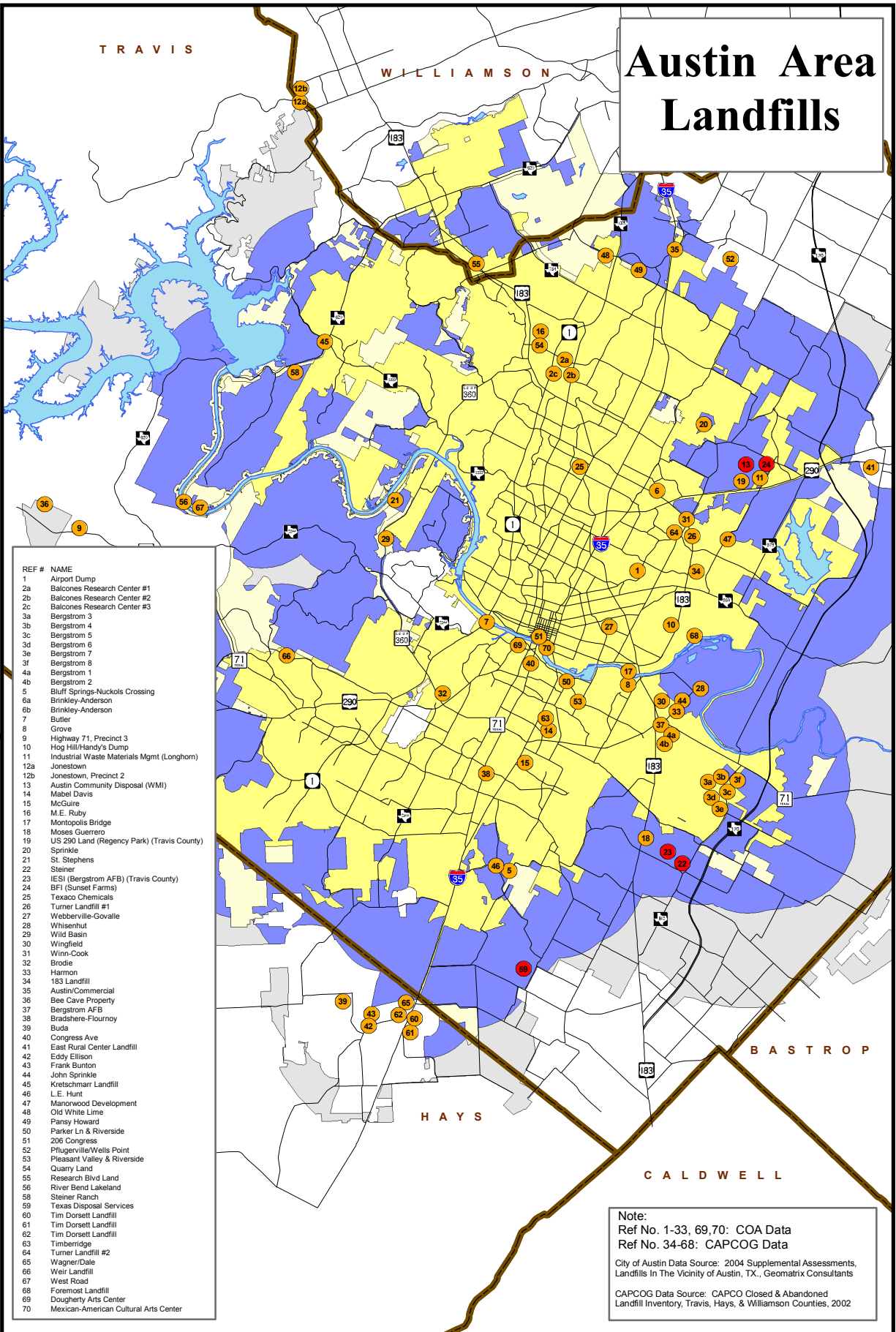


Austin Area Landfills



REF #	NAME
1	Airport Dump
2a	Balcones Research Center #1
2b	Balcones Research Center #2
2c	Balcones Research Center #3
3a	Bergstrom 3
3b	Bergstrom 4
3c	Bergstrom 5
3d	Bergstrom 6
3e	Bergstrom 7
3f	Bergstrom 8
4a	Bergstrom 1
4b	Bergstrom 2
5	Bluff Springs-Nuckols Crossing
6a	Brinkley-Anderson
6b	Brinkley-Anderson
7	Butler
8	Grove
9	Highway 71, Precinct 3
10	Hog Hill/Handy's Dump
11	Industrial Waste Materials Mgmt (Longhorn)
12a	Jonestown
12b	Jonestown, Precinct 2
13	Austin Community Disposal (WMI)
14	Mabel Davis
15	McGuire
16	M.E. Ruby
17	Montopolis Bridge
18	Moses Guerrero
19	US 290 Land (Regency Park) (Travis County)
20	Sprinkle
21	St. Stephens
22	Steiner
23	IESI (Bergstrom AFB) (Travis County)
24	BFI (Sunset Farms)
25	Texaco Chemicals
26	Turner Landfill #1
27	Webberville-Govalle
28	Whisperhut
29	Wild Basin
30	Wingfield
31	Winn-Cook
32	Brodie
33	Hammon
34	183 Landfill
35	Austin/Commercial
36	Bee Cave Property
37	Bergstrom AFB
38	Bradshere-Fourmoy
39	Ruda
40	Congress Ave
41	East Rural Center Landfill
42	Eddy Ellison
43	Frank Burston
44	John Sprinkle
45	Kretschmarr Landfill
46	L.E. Hunt
47	Manorwood Development
48	Old White Lime
49	Pansy Howard
50	Parker Ln & Riverside
51	206 Congress
52	Pflugerville/Wells Point
53	Pleasant Valley & Riverside
54	Quarry Land
55	Research Blvd Land
56	River Bend Lakeland
58	Steiner Ranch
59	Texas Disposal Services
60	Tim Dorsett Landfill
61	Tim Dorsett Landfill
62	Tim Dorsett Landfill
63	Timberidge
64	Turner Landfill #2
65	Wagner/Dale
66	Weir Landfill
67	West Road
68	Foremost Landfill
69	Dougherty Arts Center
70	Mexican-American Cultural Arts Center

Note:
 Ref No. 1-33, 69,70: COA Data
 Ref No. 34-68: CAPCOG Data
 City of Austin Data Source: 2004 Supplemental Assessments, Landfills In The Vicinity of Austin, TX., Geomatrix Consultants
 CAPCOG Data Source: CAPCO Closed & Abandoned Landfill Inventory, Travis, Hays, & Williamson Counties, 2002

Landfills

- Active
- Inactive

Jurisdiction

- City of Austin - Full Purpose
- City of Austin - Limited Purpose
- City of Austin - 2 Mile ETJ
- City of Austin - 5 Mile ETJ
- County Line

0.8571.4
 Miles

Watershed Protection & Development Review Department, The City of Austin produced this map for the sole purpose of use as a work resource and as an estimated boundary of landfills in & around Austin. The City of Austin does not warrant the map &/or information regarding its accuracy or completeness. Reproduction is not permitted without permission from the City of Austin-Watershed Protection & Development Review Department.
 Date: 03.24.2008